



Universal WE

Multi-Directional Magnetic Wet Bench



Faster part processing

- Double your inspection speed by magnetizing parts in multi-directions in a single shot
- Fully inspect longer parts, up to 35.4 in / 90 cm, without requiring an auxiliary coil
- Speed up part processing with a large automated surface shower



Advanced process control

- Maximize consistency between tests with 1000 customer-programmable techniques
- Prevent accidental and unauthorized alterations with multiple user profiles and varying tiers of control for a range of operator experience levels
- Receive visual alerts when produced amperage is 90% or less than set amperage



Real-world dependability for minimal downtime

- Siemens PLC provides reliable controls and off-the-shelf replacements
- Rely on our industry leading warranty with best in-class service delivered by a global network of trained Magnaflux authorized service centers
- Minimize downtime with standard spare parts package

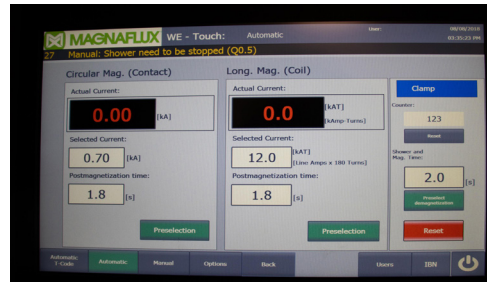


Product Properties

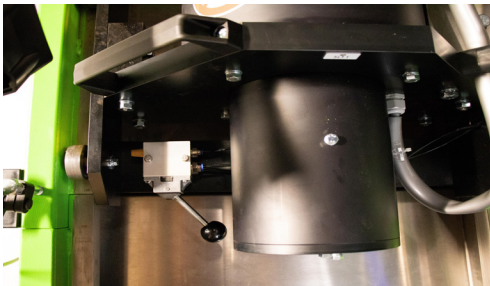
Magnetizing Current Capacity AC contact & AC coil	AC Contact	200 - 2,000 A
	AC Coil	1,500 - 15,000 A-turns
Maximum Clamping Length	35.4 in / 90 cm	
Maximum Part Length	35.4 in / 90 cm	
Available Voltages	480 V, 575 V	



Large surface shower for hands-free bathing



Touchscreen interface with automatic sequencing options



User-friendly quick clamping with built in safety stroke



Larger flux coils for maximum multi-directional part testing capacity

For more information on the Universal WE, visit magnaflux.com/Universal-WE or contact Magnaflux customer service at support@magnaflux.com or +1 847-657-5300.